



CRIF High Mark Credit Information Services Private Limited

An Update on CSR Initiatives



CSR activities for FY24-25

Area	Institute	Details of Project	Objectives	Mode of Implementation	Classification as per schedule VII
Education	Shiksha Seva Foundation	Project 'Kanya Shiksha Yojana' Education support for girl students.	Enhance Educational Opportunities: Provide access to high-quality primary and secondary education for children in underserved communities.	ii) Implementation through eligible implementing agencies as prescribed under sub-rule (1) of rule 4.	ii. Improvement in education which includes special education and employment strengthening vocation skills among children, women, elderly and the differently-abled and livelihood enhancement projects.
Skills Development	Pratham Education Foundation	Project "SkillShakti" Providing vocational training programs aimed at enhancing the skills and employability	Equip young individuals with essential vocational skills that enhance their employability. Foster sustainable development by providing students with the tools they need to achieve financial independence.		
Health Care	Mahesh Foundation	Project 'Blood Bank Enrichment' Enhancing healthcare facilities blood bank and laboratory equipment.	Ensuring the provision of robust healthcare support and the timely administration of medical treatments to patients in need.	i) Implementation by the company itself.	i. Eradicating poverty, hunger and malnutrition, promoting health care which includes sanitation and preventives health care, contribution to the Swach Bharat Kosh set-up by the Central Government for the promotion of sanitation and making available safe drinking water.
	TATA Memorial Centre	Project 'Cancer Warriors': Equipment donation and promoting Healthcare	Supporting the medical treatment of paediatric cancer patients.		

Internal

Shiksha seva – Kanya Shiksha Yojana (Maulana Azad Primary English School)

Our support includes funding for educational resources and other activities that enhance the learning experience for underprivileged girls. Girls who faced barriers to education, such as financial constraints, are now able to access quality education through Kanya Shiksha Yojana's initiatives.

Visit details – Visited on 04-02-2025, Maulana Azad Primary English School, Dharavi

Area of work – Providing education to Underprivileged Girl Child.

Activities undertaken : CRIF provided academic monetary support to 156 Girl Students covered 1st to 10th Standard students

Selection Criteria – Based on a 50% grade, 75% attendance, and parents earning less than 1 lakh or parents daily wages workers.

CRIF witnessed their success stories and their learning experience in the school. There were girls who faced the heartbreaking possibility of dropping out of school due to financial challenges. Their parents are daily wage workers, struggled to make ends meet. They addressed the challenges faced by underprivileged girls, gave detailed insight into CRIF's initiatives by offering resources, and enhancing the learning experience for students.



Shiksha seva – Kanya Shiksha Yojana (Swami Vivekanand School, Dahisar)

Kanya Shiksha Foundation by Shiksha Seva Foundation, focuses on improving government school education for underprivileged girls in Mumbai since 2012. A non-profit organization dedicated to improving education for underprivileged girls, providing them with educational opportunities.

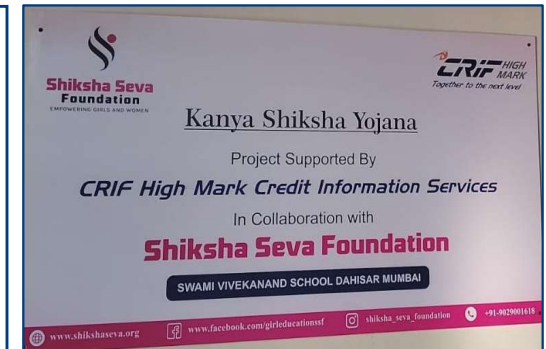
Our support includes funding for educational resources and other activities that enhance the learning experience for underprivileged girls. Underprivileged girls who faced barriers to education, such as financial constraints, are now able to access quality education through KSY's initiatives.

Visit details – Visited on 05-02-2025, Swami Vivekanand school, Dahisar

Area of work – Providing education to Underprivileged Girl Child.

Activities undertaken : CRIF provided academic monetary support, Uniform, Shoes & Socks, Health check-up, Notebooks & Stationery kits to 561 Students covered -1st to 10th Standard students

CRIF witnessed their success stories and their learning experience in the school. They addressed the challenges faced by underprivileged girls, gave a more detailed insight into CRIF's initiatives by offering resources, and enhancing the learning experience for students.



Pratham Foundation - Pratham's Multi-Skilling Center

Pratham Foundation, since 1995, boosts Indian education with low-cost innovations, collaborates nationally, pioneers creative teaching, and influences policies. They drive various initiatives, employ creative teaching methods, and impact education policies. Their focus on scalability involves engaging volunteers for grassroots learning and offers placement services. Pratham Education Foundation trains youths in Automotive-4W and Welding courses at **Pratham's Multi-Skilling Center** in Nashik, Maharashtra. The youth belong from economically disadvantaged backgrounds and provide them with employable skill sets, coupled with access to employment and entrepreneurship opportunities.

Visit details – Pratham Site Visit – Nashik, 8th February 2025

Area of work – Vocational training for **270 students** - 150 students Automotive-4W & 120 students for Welding

Activities undertaken : CRIF provided financial assistance and resources to help students gain access to upskilling programs.

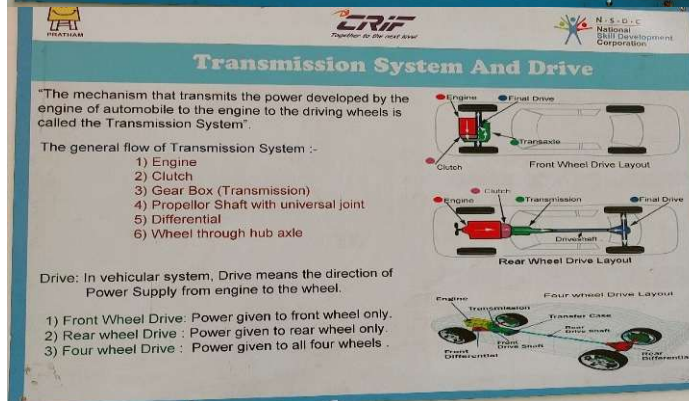
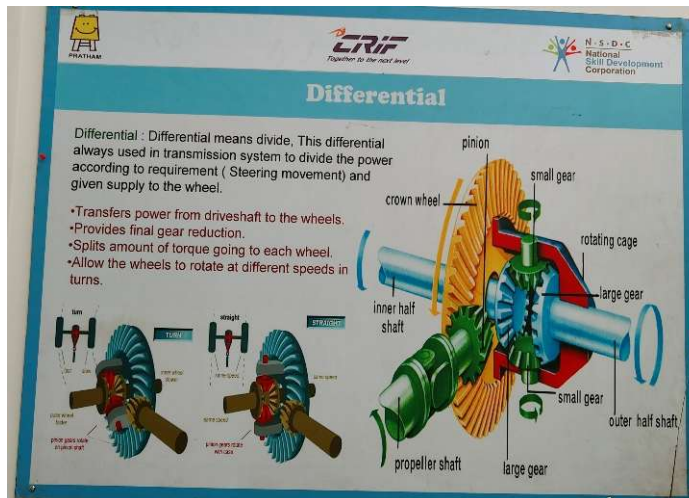
Selection Criteria – The youth targeted are 8th class or above school dropouts. The age group is between 18-35 years. They are primarily from rural and semi-urban catchment areas.



CRIF witnessed their success stories and their learning experience. Notably, the organization has achieved tangible success stories, such as more than 15 students completing welding and automotive courses, subsequently securing gainful employment in prestigious firms like M&M and Kia Motors. Despite traditionally male-dominated skill sets, the foundation has successfully encouraged and facilitated active participation by women. This inclusive approach not only breaks gender stereotypes but also contributes to a more diverse and dynamic workforce.

Internal

Pratham Foundation - Pratham's Multi-Skilling Center



Internal

Tata Memorial Hospital - Department of Digestive Diseases & Thoracic surgery

Donated to



TATA MEMORIAL HOSPITAL

By

CRIF HIGH
MARK
Together to the next level

CRIF Highmark Credit Information
Services Pvt.Ltd

Tata Memorial Centre is committed to providing comprehensive cancer care, including diagnosis, treatment, and research.

CRIF have been consistent in supporting them over the years by donating various cutting-edge machines. These contributions underscore our shared commitment to advancing medical technology and enhancing the capabilities of the Tata Memorial Centre. Our contribution has been in the form of donation of tools that aids in early diagnosis, effective treatment, and crucial research.

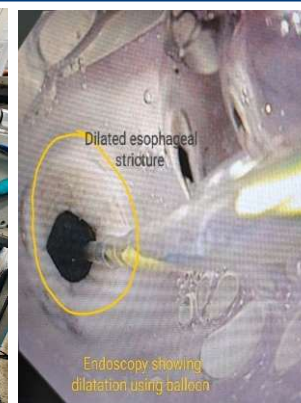
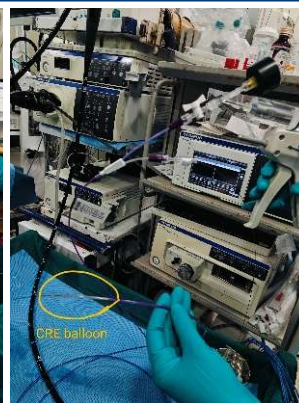
In supporting the Tata Memorial Centre, we contribute not only to the well-being of individual patients but also to the larger cause of eradicating this formidable disease. It is a testament to our shared vision of a future where cancer is no longer a threat to human lives.

Activities undertaken : Providing surgical instrument for thoracic surgery & for Department of Digestive Diseases and Clinical Nutrition

Flexible Arm With Nathanson Retractor



CRE Balloon Boston Scientific Endoscopy Equipment's



CRIF HIGH
MARK
Together to the next level

Maresh Foundation – Blood Bank Enrichment

Foldable camp cot



Needle Burner & Donor Tube Stripper



Manual Plasma Extractor



Luminar Air Flow



Blood Bank Refrigerator



Foldable camp cot





Maresh Foundation
We Care for Uncared



MyBlood
CHARITABLE BLOOD CENTER

Blood Bank Enrichment Program
Under CSR Initiative by
CRIF High Mark Credit Information Services Pvt. Ltd.



CRIF HIGH MARK
Together to the next level

Internal

CRIF HIGH MARK
Together to the next level

Maresh Foundation – Blood Bank Enrichment

The blood bank plays a crucial role in saving lives by providing timely and essential blood transfusions to vulnerable patients. Among the primary beneficiaries are HIV-infected children who require regular blood support to manage various health complications. Additionally, children suffering from Thalassemia—a genetic blood disorder that reduces hemoglobin levels—depend on monthly blood transfusions for survival. Beyond these groups, the blood bank also serves emergency patients and pregnant women who may require immediate blood transfusions during critical medical situations.

Area of work – To provide support to blood bank by funding essential medical resources. This includes equipping the blood bank with advanced laboratory and medical equipment such as hematology analyzers, component lab tools, bleeding room apparatus, and donor coaches to facilitate efficient blood donation camps.

Impact – Our contributions ensure the timely administration of treatments and the availability of robust healthcare support. Through these efforts, we aim to enhance the capacity of the blood bank, ensuring that no patient in need is left without life-saving blood support.



Internal

Maresh Foundation – Blood Bank Enrichment



Blood Bank Equipments are supported
under CSR initiative by

CRIF HIGH
MARK
Together to the next level



12 Blood Collection Monitors



Hematology Analyzer



Card Warmer CW 2400





CRIF India Initiatives

